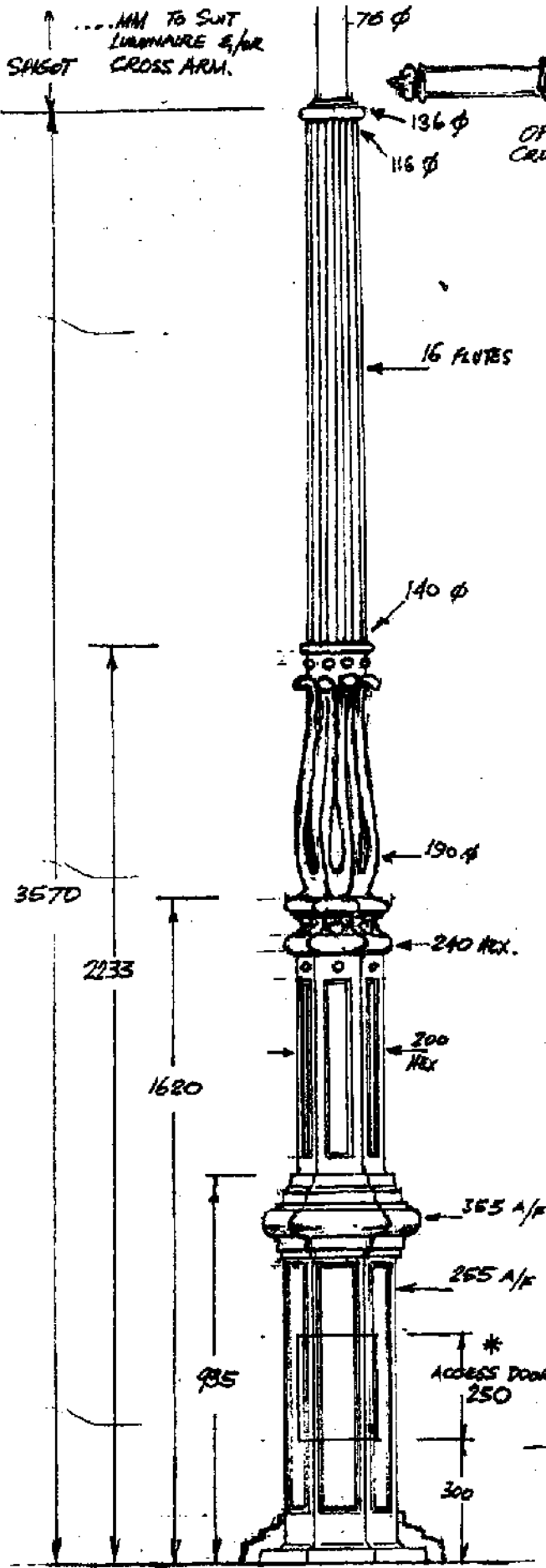


GP 6/8/02
REVISED 16/12/03



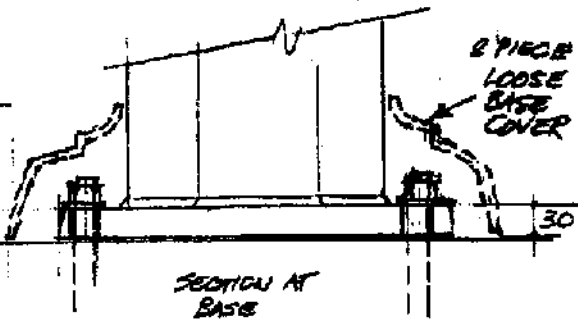
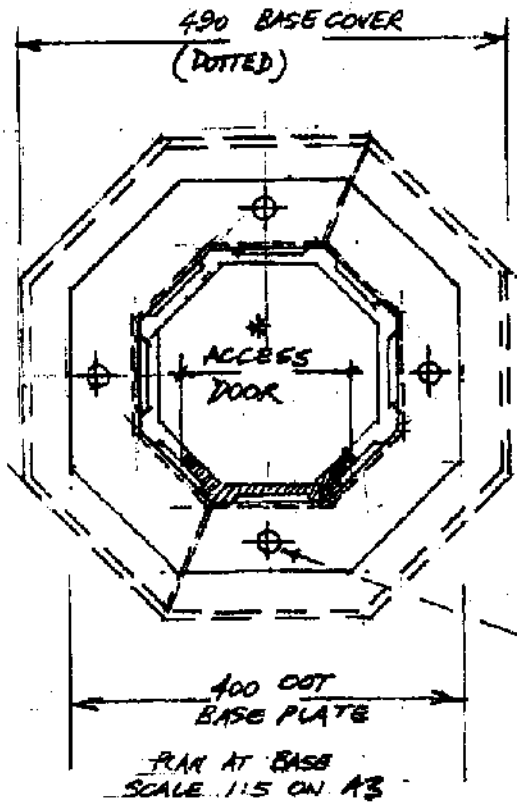
BILLMAN'S FOUNDRY.
CASTLEMAINE, VIC.

PYRENEES LIGHT COLUMN

MATERIAL: CAST IRON

SURFACE TREATMENT: SHOT BLAST,
ZINC RICH PRIMER UNDERCOAT.

* ACCESS DOOR SECURED BY
2 OFF TRI-LOB. LATCHES.



SCALE 1:10 ON A3