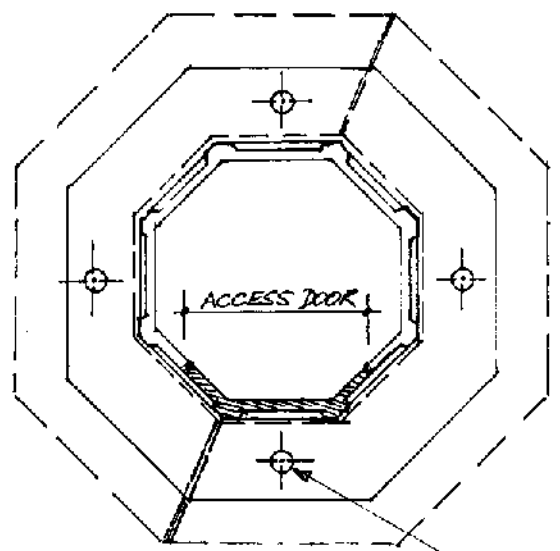


* 76 ϕ SPIGOT FOR LUMINAIRE CONNECTION

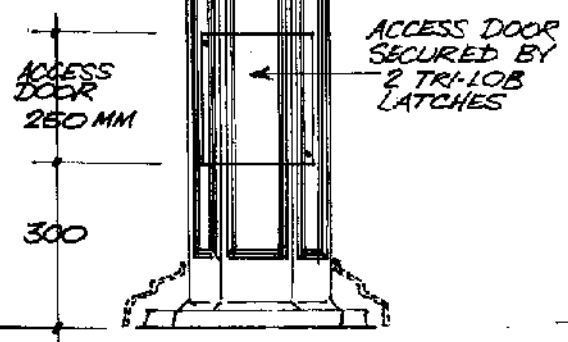
* OTHER SIZES AVAILABLE IF REQ'D TO SUIT SELECTED LUMINAIRE NOMINATE WHEN ORDERING

HARGREAVES LIGHT COLUMN

MATERIAL - CAST IRON or CAST ALUMINIUM.
 SURFACE TREATMENT - SHOT BLAST & ZINC RICH PRIMER UNDERCOAT.



SCALE 1:5 ON A3



SCALE 1:10 ON A3

